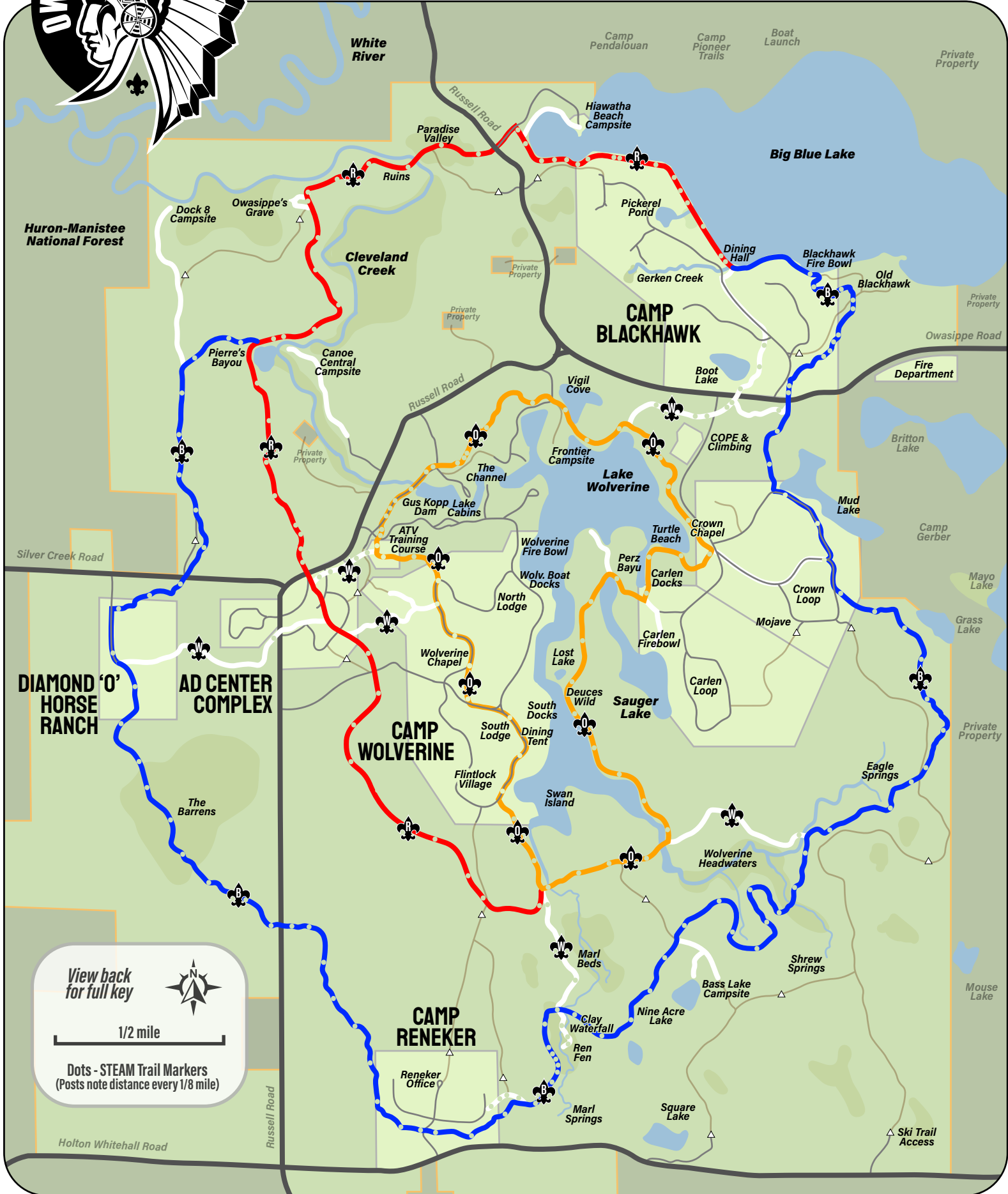




HIKING TRAIL MAP

OWASIPPE SCOUT RESERVATION

v.260416



White River

Camp Pentalouan
Camp Pioneer Trails
Boat Launch

Private Property

Big Blue Lake

Huron-Manistee National Forest

Dock 8 Campsite
Owasippe's Grave

Cleveland Creek

Paradise Valley

Hiawatha Beach Campsite

Pickeral Pond

Dining Hall

Blackhawk Fire Bowl

Old Blackhawk

CAMP BLACKHAWK

Pierre's Bayou

Canoe Central Campsite

Russell Road

Vigil Cove

Boot Lake

Fire Department

Britton Lake

Silver Creek Road

Gus Kopp Lake Dam

Cabins

Frontier Campsite

Lake Wolverine

COPE & Climbing

Mud Lake

Camp Gerber

Mayo Lake

Grass Lake

DIAMOND 'O' HORSE RANCH

AD CENTER COMPLEX

CAMP WOLVERINE

Wolverine Chapel

North Lodge

Wolverine Fire Bowl

Wolv. Boat Docks

Perz Bayou

Carlen Docks

Turtle Beach

Crown Chapel

Carlen Firebowl

Carlen Loop

Carlen Loop

Mojave

Crown Loop

Private Property

Eagle Springs

The Barrens

South Lodge

Dining Tent

Flintlock Village

South Docks

Deuces Wild

Lost Lake

Swan Island

Sauger Lake

Wolverine Headwaters

Marl Beds

Marl Springs

Clay Waterfall

Ren Fen

Marl Springs

Square Lake

Nine Acre Lake

Bass Lake Campsite

Shrew Springs

Mouse Lake

Ski Trail Access

Russell Road

Holton Whitehall Road

Reneker Office

View back for full key

1/2 mile

Dots - STEAM Trail Markers


(Posts note distance every 1/8 mile)










HIKING TRAIL INFORMATION OWASIPPE SCOUT RESERVATION

More Maps

Trail Routes

-  Blue Trail - 8.6 Miles
- Red Trail - 4.6 Miles
- Orange Trail - 5.1 Miles
- White Trails serve as connecting trails

-  Blackhawk to Grave one way - 1.6 Miles
-  Wolverine to Grave one way - 1.5 Miles
-  South Lodge to Fen one way - 1.59 Miles
-  Blackhawk to Ad Center - 2.2 Miles
-  Reneker to Fen one way - .8 Miles
-  Blackhawk to Crown Chapel and back - 2.6 Miles
-  Reneker to Wolv. Boat Docks one way - 2.5 Miles



Trail Notes

Hiking trails overlap with many bike trails, horse trails, ski trails, as well as ranger access / emergency routes (△).

Avoid diverting off of hiking trails as not all other paths are not marked on this map. Avoid private property. Do not approach cabins, private homes, or drives.

Public trail users must park at the Ad Center Complex and follow instructions at the kiosk before hiking. Trails are closed to public for scout camping season.

Bicycles and vehicles are not permitted on hiking trails. Please use designated biking trails (Not seen on this map).

The Owasippe trails remains the camp's oldest program resource, dating back to Owasippe's origin in 1911. In fact, many of these routes predate Owasippe as Native American passages, pioneer trails, or lumberjack roads. These trails cut through some of the most scenic and historic locations of Muskegon County and the Manistee National Forest.

Owasippe's Digital Forest

You will find trail makers with QR codes every 1/8th mile while hiking. Scan with your phone camera to view information about your location, the nearby ecology, advancement related questions and STEM challenges. Complete all of the challenges on your route to earn an award!

Trail Destinations

- Owasippe's Grave, Ruins, Paradise Valley** - Learning of the grave is an age old tradition for campers.
- Hiawatha Beach** - The highest overlook on big blue with tables, a beachfront, running water, and pit toilets.
- Old Blackhawk** - At the old dining hall spot an eagles nest and enjoy the smell of fallen pine needles.
- Carlen Chapel, Firebowl** - These serene stops are perfect for those seeking reflection or on an exploration.
- Carlen Docks, Turtle Beach** - These docks are hidden around the corner from the best panoramic lake view.
- Deuces Wild and Lost Lake** - Glimpse into the past at the reminisce of a ferry line and old loggers camp.
- Mojave** - Step out of the woods into the sandy grass plains of the Crown Dessert. Perfect for stargazing.
- Eagle, Shrew and Marl Springs** - Lake Wolverine begins here, view streams emerging from steep hillsides.
- Bass Lake** - Alongside this primitive campsite hides one of the best fishing spots on property.
- Ren Fen, Clay Waterfall** - The stream cuts through the earth here, carving small water features and slipping under the surface of the forest, creating a spongy terrain and quick-sand riverbeds unlike anywhere else.
- Marl Beds** - This quiet hillside trail overlooks marshland at the headwaters of Lake Wolverine.
- Wolverine Chapel** - Take a break at this beautiful pavilion on a hilltop at the center of Camp Wolverine
- Gus Kop Dam** - Feel the breeze on top of the dam and enjoy the view from here any season of the year.
- Frontier, Canoe Central, Dock 8** - These primitive sites are off the beaten path and perfect for TREK camps.
- Pierre's Bayou** - Cleveland Creek makes a sharp bend, flooding this grassland attracting birds and insects.
- The Barrens** - Stop by the ranch before exploring sand dunes, pine forests, and desert driftwood .